



Kalamazoo
County
Road
Commission

ANNUAL REPORT

Two Thousand **2009**

100 YEARS OF SERVICE - 1909 - 2009



1922 Grading Operation - Kalamazoo County

One Hundred First Annual Report of the Board of County Road Commissioners of Kalamazoo County, Michigan

For Calendar Year Ending December 31, 2009

Jeffrie M. Maddox, Chairman
Kent L. McCauley, Vice Chairman
Dennis J. Berkebile, Member
Daniel J. Moyle, Member
Kenneth R. Oscarson, Member
Joanna I. Johnson, Managing Director

FACTS AND FIGURES

PEOPLE

- KCRC employees: 51 current employees and 2 vacant positions as of 12/31/2009

PLACES

- To provide safe and convenient roads, the KCRC partners with Kalamazoo County's 15 townships:

Alamo	Cooper	Richland
Brady	Kalamazoo	Ross
Charleston	Oshtemo	Schoolcraft
Climax	Pavilion	Texas
Comstock	Prairie Ronde	Wakeshma



Bill DeYoung, Kenneth Oscarson, Travis Bartholomew - receiving award from the American Public Works Association for the Market Street improvement project in partnership with Comstock Township



Comstock Township snow plowing

• County road /bridge system

Local road miles	814
Primary road miles	449
Bridges	60
Restricted bridges	13
All-season road miles	275
Gravel road miles	101

• Signs and signals

Signs posted on county roads	19,300
Stop signs	2,500
Traffic signals under KCRC control	44
Flashing lights at intersections	41

• Jobs well-done in 2009

Miles of local road chip sealed	38
Miles of primary road chip sealed	47
Miles of local road regaveled	3
Miles of local roads paved	10
Miles of primary roads paved	18

Winter

Tons of salt used	7,262
Tons of sand/salt used	8,342



Kalamazoo
County
Road
Commission

3801 East Kilgore Road • Kalamazoo, Michigan 49001
Telephone: (269) 381-3171 • Fax: (269) 381-1760
<http://www.kalamazoocountyroads.com>

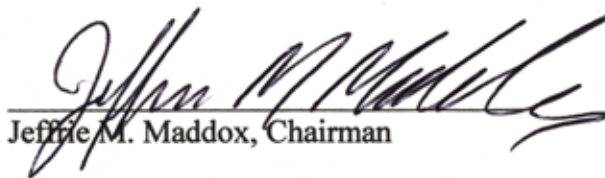
Honorable Board of County Commissioners
County of Kalamazoo
Administrative Building
201 West Kalamazoo Avenue
Kalamazoo, Michigan 49007

Commissioners:

The one hundredth annual activities and financial report of the Board of County Road Commissioners of Kalamazoo County for the calendar year 2009 is herewith submitted in compliance with the provision of P.A. 283 of 1909, as amended.

Respectfully submitted,

Board of County Road Commissioners
of Kalamazoo County



Jeffrie M. Maddox, Chairman



Kent L. McCauley, Vice Chairman



Dennis J. Berkebille, Member



Daniel J. Moyle, Member



Kenneth R. Oscarson, Member



2009 Centennial Celebration

CONTENTS

INTRODUCTION	1
PRIMARY ROAD PRESERVATION – STRUCTURAL IMPROVEMENTS	4
PRIMARY ROAD PREVENTIVE MAINTENANCE	8
LOCAL ROAD PRESERVATION – STRUCTURAL IMPROVEMENTS	10
LOCAL ROAD PREVENTIVE MAINTENANCE	14
LOCAL ROAD PROJECT SUMMARY	19
LOCAL ROAD PARTICIPATION FUNDS	20
TOWNSHIP CONTRIBUTIONS	21
LOCAL ROAD ROUTINE MAINTENANCE AND REVENUE	22
ROUTINE MAINTENANCE	23
STATEMENT OF REVENUES AND EXPENDITURES	24
STATEMENT OF REVENUES	25
STATEMENT OF EXPENDITURES	26
COMBINED BALANCE SHEET	28
GLOSSARY	30
TABLE OF ORGANIZATION	31

● Introduction

*As the Kalamazoo County Road Commission (KCRC) completed its **CENTENNIAL YEAR in 2009**, the goal of the Board of County Road Commissioners of Kalamazoo County remained: using our expertise, energy and funds to provide the safest and most convenient road system possible, and to contribute to economic development and a high quality of life throughout the county.*

The 100th Anniversary provided an opportunity to continue to appreciate the efforts of those who have set our foundation and shaped our infrastructure. We are proud to be part of KCRC and equally proud to walk and work in the footsteps of those that have done so before us. We are proud to serve the public with our Board of County Road Commissioners of Kalamazoo County and our dedicated employees in these challenging economic times. We hope you will find examples of our dedication throughout the many pages of our 2009 Centennial Annual Report.

The KCRC maintains 1,263 miles of road throughout the 576-square-mile county. The primary road system consists of 449 miles; the remaining 814 miles comprise the local road system.



12th Street – D Avenue to C Avenue (ARRA)
Alamo / Cooper Townships

PROJECT SELECTION

The KCRC establishes road improvement priorities for the primary road system. Annually, our staff develops an improvement plan spanning five years that is based on engineering assessments and on-site reviews. This plan is reviewed and projects undertaken based on current and future road needs and anticipated funding.

In December 2009, the KCRC adopted a \$41 million, five-year Primary-Road Capital-Improvement Plan (CIP) for the period 2010 through 2014. The plan includes such preservation-structural improvement projects as resurfacing, reconstructing and widening roads; upgrading certain roads to all-season status; safety projects; bridge replacements; and upgrading traffic signals.

For the local road system, road improvement priorities are developed in conjunction with township governments. The KCRC maintains a local road participation fund program that provides funds for each township that must be matched on a dollar-for-dollar basis for local road improvement projects. In 2009, KCRC applied \$1,000,000 toward this match program. These projects include local road preservation-structural improvement, preventive maintenance and construction projects such as installation of storm water basins, significant storm sewer improvements, chip seals, HMA (Hot Mix Asphalt) overlays and road reconstruction.

The financial commitment of township boards and residents through the years has proven invaluable. These partnerships help provide better service to our joint constituencies. Also available for funding, under the provisions of Act 246, Public Acts of 1931, is the special assessment district option. The State statute provides an opportunity to fund local road improvement projects through the creation of a special assessment district. This can be initiated either by response to a township board resolution or by a petition of landowners. In 2009, no special assessment districts were created.

Funding also is distributed to the KCRC through the Kalamazoo Area Transportation Study (KATS), the Metropolitan Planning Organization (MPO) for the Kalamazoo urbanized area. One of the charges of the KATS is to fulfill Federal, State, and Policy Committee directives to ensure an equitable distribution of transportation funding in Kalamazoo County, as well as to plan for the future of the transportation network within financially feasible goals. The KATS provides a framework in which the KCRC is able to coordinate with the other agencies in the Kalamazoo area. The KCRC participates in this planning process to actively seek Federal and State funding for projects. The KCRC also submits its 2010 – 2014 CIP to KATS for public comment.

Other programs available to the KCRC through KATS seek to reduce vehicle pollutant emissions by improving the flow of traffic, or by providing transportation choices that reduce pollution. Congestion Mitigation and Air Quality (CMAQ) Improvement Program funds are designated to the Kalamazoo Region to support projects that will result in improved air quality.

In 2009, the American Recovery and Reinvestment Act (ARRA) funding was also distributed through KATS. These funds provide investment in our nation's infrastructure; including roads, bridges, and public transit to save or create jobs for American workers and enhance economic growth. For KCRC these funds totaled approximately \$3 million dollars which provided funding for:

- 8th Street - Q Avenue to R Avenue
- 12th Street - C Avenue to D Avenue
- S Avenue - S Sprinkle to 29th Street

ASSET MANAGEMENT – EDUCATION

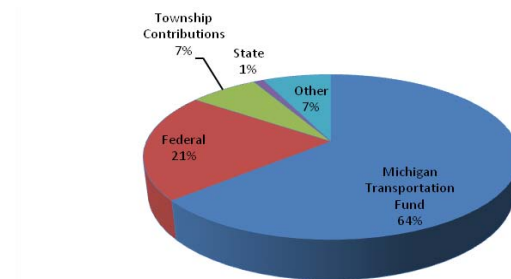
Transportation Asset Management in 2009

Infrastructure is a valuable asset in every community. It is important to maintain these assets as efficiently and cost effectively as possible. A transportation asset management program allows Kalamazoo County to plan and prioritize road improvements. Since 2004, federal aid eligible road asset management data has been collected in Kalamazoo County. In 2009, the KCRC began a process of collecting data on the local system as well. The data collected used the Pavement Surface Evaluation Rating (PASER) system, as is used in the federal aid data collection. The method of collection using the Roadsoft GIS laptop data collector and trained KCRC staff consisted of a survey of roads and each pavement was assigned a rating based on PASER criteria. In 2009, the local ratings were completed for Alamo, Climax, Ross and Texas Townships. This data will assist in establishing a strategic plan for maintaining our infrastructure.

Educational Opportunities for Local Officials Hosted in 2009

- Transportation Asset Management – A Workshop for Elected Officials
- Centennial Celebration
- Setting Realistic Speed Limits

REVENUES



MICHIGAN TRANSPORTATION FUND

The Michigan Transportation Fund (MTF), the repository of fuel taxes and vehicle registration fees collected by the state, is the principal source of road commission funding. The collected funds are distributed to the Michigan Department of Transportation (MDOT), 53 cities and villages, and 83 county road commissions, using a formula based on variables that include the density of population, road mileage by classification and collected vehicle registration fees.

Our 2007 general allocation revenue from the MTF decreased by \$19,469; in 2008 MTF decreased by \$353,202 and in 2009 our MTF decreased by \$267,179. Our MTF revenue since 2005 has decreased over \$1.3 million dollars. The decrease is attributable to several issues. Since the fuel tax is based on a flat per-gallon rate, and not on a percentage of total fuel purchased (for example, such as the sales tax), the fewer gallons of fuel sold has a significant impact on this important revenue stream. We have also seen the impact of rising prices of materials and related products used in our road maintenance operations. As fuel efficiency rises and less gallons of fuel are sold, the resulting decrease in MTF revenues continues to become a challenge to road commissions throughout the state.

Additionally, there continue to be off-the-top deductions of MTF to the Michigan Department of Treasury, Michigan Department of Environmental Quality and the Auditor General.

MICHIGAN STATE AND FEDERAL TRANSPORTATION ECONOMIC DEVELOPMENT FUNDS

The KCRC also works diligently to qualify for special sources of revenue for road improvement projects from other state and federal sources.

● Introduction

State sources include critical bridge funds, snow-removal funds, and Transportation Economic Development Funds or TEDF dollars. TEDF Category A funds are competitively available for road projects related to industry development and redevelopment opportunities; however, the 2009 – 2010 state budget has a \$12 million reduction in TEDF Category A funds. TEDF Category D funds are available for use to upgrade roads to all-season standards and to develop a network of roads that are not weight restricted during seasonal road thaws. TEDF Category F funds are competitively available for use to upgrade roads to complete broken links in the all-season-road network in the urban area.

FEDERAL SURFACE TRANSPORTATION PROGRAM FUNDS

Federal revenue sources are provided for in the Federal Transportation Legislation. In 2005, Congress approved and the President signed the Safe, Accountable, Flexible, Efficient Transportation Equity Act: A Legacy for Users (SAFETEA-LU). Federal sources include Surface Transportation Program (STP) funds. One project we undertook during 2009 utilizing STP funds was:

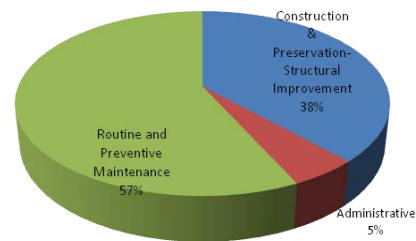
- 43rd Street from R Avenue to Q Avenue, Climax Township

FEDERAL LOCAL BRIDGE PROGRAM FUNDS

The funding for 95% of the construction costs associated with replacement of critical bridges is provided from the Federal Highway Bridge Replacement and Rehabilitation Program and the Michigan Critical Bridge Program.

These funds are available on a statewide competitive basis. Bridges eligible for these funds must be structurally deficient, functionally obsolete and in need of repair or do not function in a way that meets traffic needs. Applications are rated and prioritized annually by a nine-member committee comprised of representatives from county road commissions, cities, villages and MDOT. The committee considers the condition of the bridges, importance to the street or road network, and the local agency's ability to cover its share of the construction costs.

EXPENDITURES

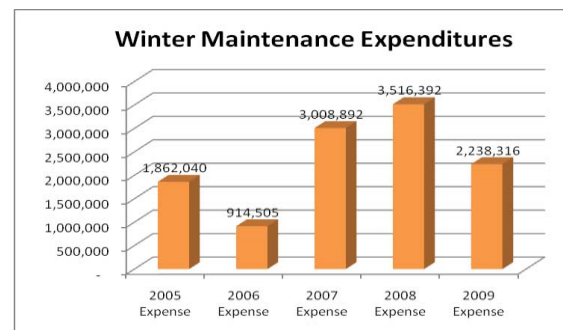


Structural Improvements and Maintenance Operations

During 2009, approximately 28 miles of roads were paved totaling over \$5 million dollars. To preserve the capital investment in our roads, more than 85 miles of roads were chip sealed totaling over \$2.7 million dollars.

Safety improvement projects also were completed, including, addition of turn lanes at intersections, shoulder paving, upgrading of traffic signals and new traffic signal installations at intersections.

In 2009, we continued to take every possible step to increase our efficiency by controlling overhead and administrative costs. Steps taken include the reduction of administrative staff, benefit modifications, modifications to our winter maintenance operations, and modifications to material usage.



The county road system continues to grow. During the past five years, 21.41 miles of roads have been added to the public road system. These new roads are the result of developments that built roads to the public road standards and then were donated for public use. These new roads require public road services; however, this growth reflects positively on the quality of life and business climate of Kalamazoo County.

- **PRIMARY ROAD PRESERVATION**
- **STRUCTURAL IMPROVEMENTS**
- Including Administrative and Equipment Allocations

PROJECT DESCRIPTION	TOTAL
6th Street – 500' south of N Avenue to Stadium Drive, Project No. 459 006 210947. Design and construction engineering services and contractor payment by State for reconstruction project, pulverizing existing roadway and resurfacing with HMA. Project includes Oshtemo Township participation for sewer installation.	355,395.96
8th Street – KL Avenue to M-43, Project No. 459 008 210124. Design engineering for proposed reconstruction project.	3,073.37
8th Street – R Avenue to Q Avenue, Project No. 459 008 210902. Design engineering for reconstruction project, pulverizing existing pavement and resurfacing roadway. Project is part of the American Recovery and Reinvestment Act (ARRA) program.	354,958.21
9th Street – at Quail Run, Project No. 459 009 210118. Design engineering services for proposed intersection improvement project.	920.11
9th Street – 1.15 mile north of Stadium Drive to KL Avenue, Project No. 459 009 210677. Construction engineering and contractor payments by State for 2008 project to reconstruct roadway widening to 3 lanes. 2009 costs include guardrail installation.	29,479.09
12th Street – at Milham Road and Texas Drive, Project No. 459 012 210116. Design engineering for proposed intersection reconstruction project.	1,095.67
12th Street – C Avenue to north county line, Project No. 459 012 210900. Design engineering for proposed reconstruction project.	49,754.89
12th Street – D Avenue to C Avenue, Project No. 459 012 210903. Design and construction engineering and contractor payment by State for reconstruction project utilizing American Recovery & Reinvestment Act (ARRA) Funds.	420,610.28
24th Street – D Avenue to CD Avenue, Project No. 459 024 210913. Single HMA wedge and valley curb.	34,774.81
35th Street – Kalamazoo River to M-96, Project No. 459 035 210678. Construction engineering services for 2008 HMA resurfacing project.	1,168.56
35th Street – I-94 westbound off ramp to Kalamazoo River, Project No. 459 035 210960. Design engineering services for proposed project.	41,126.30
35th Street – .09 mile north of Miller Drive, Project No. 459 035 210026. Design engineering for proposed intersection relocation project.	7,980.25
38th Street – MN Avenue to Climax Drive, Project No. 459 038 210027. Construction engineering for 2007 reconstruction project.	1,080.25
40th Street – MN Avenue to L Avenue, Project No. 459 040 210899. Design engineering for proposed HMA resurfacing project.	862.52
42nd Street and 43rd Street – .09 mile south of TS Avenue to R Avenue, Project No. 459 042 210031. Project final by State.	25,652.97

- PRIMARY ROAD PRESERVATION
- STRUCTURAL IMPROVEMENTS
- Including Administrative and Equipment Allocation

PROJECT DESCRIPTION	TOTAL
43rd Street – R Avenue to Q Avenue, Project No. 459 042 210886. Construction engineering and contractor payment by State for HMA resurfacing project. Project includes intersection reconstruction at 43 rd Street and Q Avenue with a 4-way stop.	758,985.83
D Avenue – at 14th Street, Project No. 459 056 210800. Construction engineering and contractor payment by State for 2008 intersection improvement.	4,080.93
G Avenue – .03 mile east of 37th Street to .05 mile east of 39th Street, Project No. 459 062 210419. Construction engineering and contractor payment by State for 2007 resurfacing and reconstruction project.	5,364.54
KL Avenue – at 11th Street, Project No. 459 056 210798. Construction engineering for 2008 intersection and signal installation project.	132.12
N Avenue (Kilgore Road) – at 29th Street, Project No. 459 074 210120. Design engineering for proposed intersection improvement project.	1,169.87
S Avenue – S. Sprinkle Road to 29 th Street, Project 459 084 210901. Design and construction engineering and contractor payment by State for pulverization and HMA resurfacing project using ARRA Funds.	990,100.44
VW Avenue – .25 mile east of 14th Street to 18th Street, Project No. 459 091 210692. Contractor payment by State for 2008 project to widen and resurface roadway.	61,219.83
Barney Road – Douglas Avenue west 2200', project No. 459 064 210121. Milling, HMA overlay and gravel shoulders.	58,118.08
Douglas Avenue – B Avenue to North County Line, project No. 459 016 210910. Milling, HMA overlay and gravel shoulders.	176,378.80
Drake Road – West Michigan Avenue to Stonebrook Avenue, Project No. 459 012 210126. Participation with City of Kalamazoo for traffic signal upgrade and interconnect project.	13,569.64
Drake Road - at Stonebrook Avenue, Project No. 459 012 210767. Contractor payment by State for 2008 traffic signal installation project.	2,068.43
Mosel Avenue – N. Westnedge Avenue to Kalamazoo River Bridge, Project No. 459 064 210782. Contractor payment by State and construction engineering for 2008 project to reconstruct roadway.	22,765.44
Ravine Road – at Squires Drive, Project No. 459 012 210797. Construction engineering and contractor payment by State for 2008 safety improvement project at intersection by adding a left-turn lane on Ravine Road.	45,418.73
North Sprinkle Road – at G Avenue, Project No. 459 024 210961. Design engineering for proposed intersection safety improvement and traffic signal upgrade.	35,837.48
South Sprinkle Road – Zylman Avenue to ML Avenue, Project No. 459 024 210796. Construction engineering services and contractor payments by State for traffic signal upgrades and corridor interconnect utilizing State Congestion Mitigation and Air Quality (CMAQ) Funds.	1,135,170.40

- PRIMARY ROAD PRESERVATION
- STRUCTURAL IMPROVEMENTS
- Including Administrative and Equipment Allocations

PROJECT DESCRIPTION	TOTAL
South Sprinkle Road – N Avenue (Kilgore Road) to I-94 interchange, Project No. 459 024 210830. Construction engineering services and contractor payment by State for 2008 HMA milling and surfacing project.	50,006.94
South Sprinkle Road – 950' south of S Avenue to S Avenue, Project No. 459 024 210912. Single HMA wedge.	36,360.02
Squires Drive – Drake Road to Ravine Road, Project No. 459 061 210914. HMA overlay and gravel shoulders.	54,039.07
Stadium Drive – 4 th Street to 6 th Street, Project No. 459 073 210115. Design engineering for proposed resurfacing project.	19,353.09
Stadium Drive – at Venture Park, Project No. 459 074 210119. Design engineering for proposed intersection improvement project.	3,003.66
N. Westnedge Avenue – Mosel Avenue to D Avenue, project No. 459 018 210585. Contractor payment by State and construction engineering services for 2007 project to reconstruct road.	7,539.24
Total Primary Structural Improvements	4,808,615.82



12th Street – D Avenue to C Avenue American Recovery and Reinvestment Act Project (ARRA) – Alamo/Cooper Townships

- PRIMARY STRUCTURES
- HEAVY MAINTENANCE
- Including Administrative and Equipment Allocations

PROJECT DESCRIPTION	TOTAL
9th Street Bridge – over Amtrak RR (south of KL Ave), Project No. 460 009 220550. Construction engineering and contractor payment by State for 2008 project to replace existing box-beam bridge.	143,327.90
24th Street Bridge – south of X Avenue (over Portage Creek), Project No. 460 024 220523. Design engineering service and right-of-way purchases for proposed bridge.	43,858.13
35th Street Bridge – at Galesburg city limits (over Kalamazoo River), Project No. 460 035 220275. Construction engineering and contractor payment by State for 2008 rehabilitation project.	60,069.98
Parkview Avenue Bridge – over US-131, Project No. 460 072 220801. Contribution toward 2008 Michigan Department of Transportation project.	130,595.81
Total Primary Bridge	377,851.82



35th Street Bridge over Kalamazoo River Rehabilitation Project – Comstock Township

- **PRIMARY ROAD**
- **PREVENTIVE MAINTENANCE**
- Including Administrative and Equipment Allocations

PROJECT DESCRIPTION	TOTAL
8th Street – U Avenue to R Avenue, Project No. 474 008 380962. Crack sealing and Chip seal.	65,270.43
33rd Street – M-96 to G Avenue, Project No. 474 033 380964. Crack sealing and Chip seal.	84,017.68
36th Street – PQ Avenue to MN Avenue, Project No. 474 036 380965. Multiple HMA wedges and Chip seal.	75,879.06
D Avenue – Riverview Drive to N. Sprinkle Road, Project No. 474 056 380966. Chip seal.	31,370.01
D Avenue – West county line to 6 th Street, Project No. 474 056 380967. Crack sealing and Chip seal.	80,997.94
KL Avenue – 11 th Street to Drake Road, Project No. 474 067 380968. Crack sealing and Chip seal.	19,257.96
ML Avenue – S. Sprinkle Road to River Street, Project No. 474 071 380969. Crack sealing and Chip seal.	24,390.20
O Avenue – 8 th Street to 9 th Street and 9th Street – O Avenue to Meridian Drive, Project No. 474 076 380970. Crack sealing, HMA wedging at 3 locations and Chip seal.	178,080.71
O Avenue – 38 th Street to 42 nd Street, Project No. 474 076 380971. Crack sealing, HMA wedging at 4 locations and Chip seal.	84,873.35
P Avenue – West county line to 3 rd Street, Project No. 474 078 380972. Crack sealing and Chip seal.	33,040.87
Q Avenue – 29 th Street to 36 th Street, Project No. 474 080 380973. Crack sealing and Chip seal.	78,182.83
QR Avenue – 25 th Street to 29 th Street, Project No. 474 082 380974. Crack sealing and Chip seal.	39,520.60
R Avenue – 36 th Street to east county line, Project No. 474 082 380975. Crack sealing and Chip seal.	127,143.73
UV Avenue – 26 th Street to 29 th Street, Project No. 474 089 380976. Chip seal.	36,512.50
YZ Avenue – 38 th Street to 42 nd Street, Project No. 474 096 380977. Crack sealing and Chip seal.	52,601.72
Comstock Avenue – S. Sprinkle Road to ML Avenue, Project No. 474 069 380978. Crack sealing and Chip seal.	37,564.81
East Michigan Avenue – 40 th Street to Mercury Drive, Project No. 474 076 380979. Crack sealing, Gravel work and Chip seal.	111,348.39

- **PRIMARY ROAD**
- **PREVENTIVE MAINTENANCE**
- Including Administrative and Equipment Allocations

PROJECT DESCRIPTION	TOTAL
Nazareth Road – M-43 to G Avenue, Project No. 474 030 380980. Chip seal.	29,400.67
Portage Road – XY Avenue to W Avenue, Project No. 474 020 380981. Multiple HMA wedges and Chip seal.	101,538.75
S. Sprinkle Road – N Avenue (Kilgore Road) to I-94, Project No. 474 024 380904. Chip sealing of center-turn lane.	6,489.80
S. Sprinkle Road – I-94 to Lake Street, Project No. 474 024 380983. Crack sealing and Chip seal.	114,919.38
River Street – ML Avenue to BL-94, Project No. 474 026 380982. Crack sealing and Chip seal.	6,283.17
<hr/>	
Total Primary Preventive Maintenance	1,418,684.56



8th Street north of Stadium Drive Crack/Chip Seal – Oshtemo Township

- **LOCAL ROAD PRESERVATION**
- **STRUCTURAL IMPROVEMENTS**
- Including Administrative and Equipment Allocations

PROJECT DESCRIPTION	TOTAL
• ALAMO TOWNSHIP ~ 38.59 Local Road Miles	
AB Avenue – 1 st Street to Ravine Road, Project No. 489 105 510911. Multiple HMA wedges.	12,798.92
TOWNSHIP TOTAL	12,798.92
<hr/>	
• BRADY TOWNSHIP ~ 44.04 Local Road Miles	
26th Street – TU Avenue to T Avenue, Project No. 489 318 510984. HMA overlay and gravel shoulders.	46,149.78
30th Street – U Avenue north 1250', Project No. 489 318 510985. HMA overlay and gravel shoulders.	23,695.69
TOWNSHIP TOTAL	69,845.47
<hr/>	
• CHARLESTON TOWNSHIP ~ 22.65 Local Road Miles	
TOWNSHIP TOTAL	0.00
<hr/>	
• CLIMAX TOWNSHIP ~ 46.40 Local Road Miles	
TOWNSHIP TOTAL	0.00
<hr/>	
• COMSTOCK CHARTER TOWNSHIP ~ 74.76 Local Road Miles	
Market Street – River Street to Stalwart Street, Project No. 489 210 510949. Pulverized existing roadway, HMA overlay and gravel shoulders.	192,737.77
Market Street – 1880' east of River Street at Cramer Drain, Project No. 489 210 510950. Culvert replacement.	10,322.69

- **LOCAL ROAD PRESERVATION**
- **STRUCTURAL IMPROVEMENTS**
- Including Administrative and Equipment Allocations

PROJECT DESCRIPTION	TOTAL
• COMSTOCK CHARTER TOWNSHIP – Continued	
Stalwart Street – L Avenue to Market Street, Project No. 489 210 510950. HMA overlay and gravel shoulders.	33,413.51
TOWNSHIP TOTAL	236,473.97

• COOPER CHARTER TOWNSHIP ~ 62.83 Local Road Miles

F Avenue – 14 th Street to Douglas Avenue, Project No. 489 106 510101. Multiple HMA wedges.	17,629.98
Solvel Street – G Avenue to Thayer Street, Project No. 489 106 510102. HMA overlay and gravel shoulders.	29,779.65
16th Street – Douglas Avenue to B Avenue, Project No. 489 106 510922. Multiple HMA wedges.	15,968.20
TOWNSHIP TOTAL	63,377.83

• KALAMAZOO CHARTER TOWNSHIP ~ 74.59 Local Road Miles

Carleton Avenue – Field Avenue to 157' east of Bronson Avenue, Project No. 489 111 510104. HMA overlay and gravel shoulders. Project includes HMA wedging and manhole adjustments.	61,072.68
Yew Street – Skyline Street to Tamarack Street and Fir Avenue east – Skyline Street to Tamarack Street and Andora Avenue – Sagebrush Street to Tamarack Street and Tamarack Street – Yew Street to 133' north of Andora Avenue and Sagebrush Street – Andora Avenue to 265' north of Sagebrush Street and Fir Avenue west – Cumberland Street to 52' east of Chaparral Street and Yucca Point – Cumberland Street to Chaparral Street and Sequoia Street – Chaparral Street east 348', Project No. 489 111 510106. HMA overlay.	117,708.35
Cherokee Street – at Olney Road, Project No. 489 111 510143. Storm sewer pump replacement.	3,882.09
TOWNSHIP TOTAL	182,663.12

- **LOCAL ROAD PRESERVATION**
- **STRUCTURAL IMPROVEMENTS**
- Including Administrative and Equipment Allocations

PROJECT DESCRIPTION	TOTAL
• OSHTEMO CHARTER TOWNSHIP ~ 74.43 Local Road Miles	
Quail Run Drive – 45’ north of Pheasant Lane to 171’ north of Pheasant Lane and Quail Run Drive – 535’ north of Fairgrove Street to 1300’ north of Fairgrove Street and Quail Run Drive – 580’ north of Tanager Lane to 640’ north of Tanager Lane, Project No. 489 112 510107. Multiple HMA wedges. Project includes removal and replacement of 70’ concrete curb.	37,273.84
TOWNSHIP TOTAL	37,273.84
<hr/>	
• PAVILION TOWNSHIP ~ 48.35 Local Road Miles	
RS Avenue – 25 th Street east 3110’, Project No. 489 315 510109. HMA overlay and gravel shoulders.	59,927.47
T Avenue – 32nd Street to 33rd Street, Project No. 489 315 510110. HMA overlay and gravel shoulders.	44,532.09
TOWNSHIP TOTAL	104,459.56
<hr/>	
• PRAIRIE RONDE TOWNSHIP ~ 52.11 Local Road Miles	
4th Street – V Avenue to U Avenue, Project No. 489 420 510943. Gravel installation.	17,542.05
Y Avenue – 3252’ east of Vankal Street to 3751’ east of Vankal Street, Project No. 489 420 510944. Gravel installation.	2,452.83
1st Street – 2880’ north of XY Avenue to 3380’ north of XY Avenue, Project No. 489 420 510945. Gravel installation.	2,451.24
1st Street – V Avenue to U Avenue, Project No. 489 420 510946. Gravel installation.	16,732.24
TOWNSHIP TOTAL	39,178.36
<hr/>	
• RICHLAND TOWNSHIP ~ 49.24 Local Road Miles	
35th Street – D Avenue to CD Avenue, Project No. 489 207 510948. Single HMA wedge and valley curb.	17,795.24
TOWNSHIP TOTAL	17,795.24
<hr/>	

- **LOCAL ROAD PRESERVATION**
- **STRUCTURAL IMPROVEMENTS**
- Including Administrative and Equipment Allocations

PROJECT DESCRIPTION	TOTAL
• ROSS TOWNSHIP ~ 53.53 Local Road Miles	
West Gull Lake Drive – D Avenue north 1100', Project No. 489 208 510937. Single HMA wedge.	16,245.94
Shoal Drive – 37 th Street to West Gull Lake Drive, Project No. 489 208 510938. HMA overlay.	9,831.77
TOWNSHIP TOTAL	26,077.71
• SCHOOLCRAFT TOWNSHIP ~ 36.18 Local Road Miles	
TOWNSHIP TOTAL	0.00
• TEXAS CHARTER TOWNSHIP ~ 88.80 Local Road Miles	
Beatrice Drive – 9 th Street west 2400', Project No. 489 413 510111. HMA overlay.	74,300.92
Heathrow Avenue – 12 th Street west 137', Project No. 489 413 510112. Single HMA wedge.	9,114.73
Stapleton Drive – 12 th Street west 91', Project No. 489 413 510113. Single HMA wedge.	4,741.25
Warbler Drive – 354' north of Swallow Avenue to 424' north of Swallow Avenue, Project No. 489 413 510114. Single HMA wedge.	4,259.19
TOWNSHIP TOTAL	92,416.09
• WAKESHMA TOWNSHIP ~ 47.52 Local Road Miles	
44th Street – X Avenue to W Avenue, Project No. 489 317 510999. Pulverized road and installed gravel. Project will be completed in 2010.	26,143.09
TOWNSHIP TOTAL	26,143.09
Total Local Road Preservation Structural Improvements	908,503.20

- **LOCAL ROAD**
- **PREVENTIVE MAINTENANCE**
- Including Administrative and Equipment Allocations

PROJECT DESCRIPTION	TOTAL
----------------------------	--------------

• **ALAMO TOWNSHIP** ~ 38.59 Local Road Miles

F Avenue – 6 th Street to 7 th Street, Project No. 504 105 6809333. Double seal.	43,347.18
--	-----------

C Avenue – 12th Street west 2150', Project No. 504 318 680934. Chip seal.	8,596.27
---	----------

E Avenue – 12th Street west 1950', Project No. 504 318 680935. Chip seal.	7,944.46
---	----------

TOWNSHIP TOTAL	59,887.91
-----------------------	------------------

• **BRADY TOWNSHIP** ~ 44.04 Local Road Miles

28th Street – W Avenue to V Avenue, Project No. 504 318 680760. Crack seal and Chip seal.	25,947.67
---	-----------

TOWNSHIP TOTAL	25,947.67
-----------------------	------------------

• **CHARLESTON TOWNSHIP** ~ 22.65 Local Road Miles

36th Street – Galesburg Village Limits to G Avenue, Project No. 504 210 680929. Chip seal. Project shared with Comstock Township. See Comstock Township for project costs.

TOWNSHIP TOTAL	0.00
-----------------------	-------------

• **CLIMAX TOWNSHIP** ~ 46.40 Local Road Miles

Q Avenue – 44th Street to 45th Street, Project No. 504 316 680125. Chip seal.	15,627.91
---	-----------

47 th Street – PQ Avenue to ON Avenue, Project No. 504 316 680926. Chip seal.	33,309.24
--	-----------

42 nd Street – P Avenue to O Avenue, Project No. 504 316 680927. Chip seal.	17,103.95
--	-----------

38th Street – R Avenue to PQ Avenue Project No. 504 316 680951. Chip seal.	31,344.80
--	-----------

40th Street – Q Avenue to P Avenue, Project No. 504 316 680952. Chip seal.	21,168.65
--	-----------

S Avenue – 36 th Street to 39 th Street, Project No. 504 316 680953. Chip seal.	39,502.51
---	-----------

TOWNSHIP TOTAL	158,057.06
-----------------------	-------------------

- **LOCAL ROAD**
- **PREVENTIVE MAINTENANCE**
- Including Administrative and Equipment Allocations

PROJECT DESCRIPTION	TOTAL
• COMSTOCK CHARTER TOWNSHIP ~ 74.76 Local Road Miles	
36th Street – Galesburg Village Limits to G Avenue, Project No. 504 210 680929. Chip seal. Project shared with Charleston Township.	41,705.97
TOWNSHIP TOTAL	41,705.97

• COOPER CHARTER TOWNSHIP ~ 62.83 Local Road Miles	
C Avenue – 12 th Street to 14 th Street, Project No. 504 106 680103. Multiple HMA spot wedges and Chip seal.	46,151.11
Observation Avenue – Rollridge Avenue east 670', Project No. 504 106 680918. Fog Seal.	3,500.90
Bracket Avenue – Riverview Drive to Thayer Avenue and Thayer Avenue – Bracket Avenue to Lindenwood Street and Lindenwood Street – Thayer Avenue north 1175' and Polaris Street – Hillsight Street to Lindenwood Street and Hillsight Street – Thayer Avenue to Polaris Avenue, Project No. 504 106 680919. Chip seal.	25,880.81
AB Avenue – 12th Street to Douglas Avenue, Project No. 504 106 680963. Multiple HMA spot wedges and Chip seal.	28,181.51
TOWNSHIP TOTAL	103,714.33

• KALAMAZOO CHARTER TOWNSHIP ~ 74.59 Local Road Miles	
Chicago Avenue – Schippers Lane to East Main Street, Project No. 504 106 680105. Crack sealing, HMA spot wedges at multiple locations and Chip seal.	39,353.72
TOWNSHIP TOTAL	39,353.72

• OSHTEMO CHARTER TOWNSHIP ~ 74.43 Local Road Miles	
8th Street – Stadium Drive to KL Avenue, Project No. 504 112 680108. Multiple HMA spot wedges and Chip seal.	58,142.74
Atlantic Avenue – 9 th Street to Parkview Avenue, Project No. 504 112 680987. Chip seal.	8,853.19
Chime Street – Stadium Drive south 12', Project No. 504 112 680988. Infra red heat patch.	452.25

- **LOCAL ROAD**
- **PREVENTIVE MAINTENANCE**
- Including Administrative and Equipment Allocations

PROJECT DESCRIPTION **TOTAL**

• **OSHTEMO CHARTER TOWNSHIP – Continued**

Partridge Lane – Quail Run Drive South to Quail Run Drive North, Project No. 504 112 680989. Sami-seal. 21,379.07

Oak Highlands Drive – 314’ west of Cross Country Drive to 9th Street and Cross Country Drive – 7th Street to 9th Street, Project No. 504 112 680990. Sami-seal. 90,222.40

TOWNSHIP TOTAL **179,049.65**

• **PAVILION TOWNSHIP ~ 48.35 Local Road Miles**

34th Street – T Avenue to TS Avenue, Project No. 504 315 680986. Crack sealing and Chip seal. 20,393.41

TOWNSHIP TOTAL **20,393.41**

• **PRAIRIE RONDE TOWNSHIP ~ 52.11 Local Road Miles**

V Avenue – 5th Street to 8th Street, Project No. 504 420 680939. Chip Seal. 27,511.47

Deer Run Road – Prairie Ronde Street to Indian Valley Street and **Indian Valley Street** – 1328’ south of Deer Run Road to 1000’ north of Deer Run Road and **Sunshine Avenue** – Indian Valley Street west 590’. Project No. 504 420 680940. Chip seal. 24,754.79

10th Street – U Avenue north 5210’, Project No. 504 420 680941. Chip seal. 16,746.01

Paw Paw Heights Drive – 2nd Street to Beech Bay Drive and Beech Bay Drive – Paw Paw Heights Drive east 665’ and **Rainbow Ridge Drive** – Paw Paw Heights Drive east 730’, Project No. 504 420 680942. Chip seal. 15,030.72

TOWNSHIP TOTAL **84,042.99**

• **RICHLAND TOWNSHIP ~ 49.24 Local Road Miles**

34th Street – DE Avenue to D Avenue, Project No. 504 207 680905. Crack sealing and Chip seal. 19,909.66

AB Avenue – M-89 to 28th Street, Project No. 504 207 680906. Chip seal. 14,820.09

D Avenue – M-89 east 8200’, Project No. 504 207 680907. Chip seal. 32,366.43

- **LOCAL ROAD**
- **PREVENTIVE MAINTENANCE**
- Including Administrative and Equipment Allocations

PROJECT DESCRIPTION	TOTAL
• RICHLAND TOWNSHIP - Continued	
EF Avenue – M-43 to 32 nd Street, Project No. 504 207 680908. Chip Seal.	22,738.06
EF Avenue – 32 nd Street east 3200', Project No. 504 207 680909. Chip Seal.	15,422.53
AB Avenue – 28 th Street to 30 th Street, Project No. 504 207 680915. Chip Seal.	20,272.29
F Avenue – 27 th Street to 28 th Street, Project No. 504 207 680916. Chip Seal.	10,619.88
TOWNSHIP TOTAL	136,148.94

• ROSS TOWNSHIP ~ 53.53 Local Road Miles	
D Avenue – 37 th Street to 38 th Street, Project No. 504 208 680931. Chip Seal.	14,186.14
B Avenue – 1500' east of 44 th Street to 3100' east of 44 th Street, Project No. 504 208 680932. Double seal.	20,087.24
Lake Vista Drive – 37 th Street east 1050', Project No. 504 208 680991. Chip Seal.	7,934.18
Delmar Street – 36 th Street east 1400' and Merrimac Street – Little Field Avenue to 770' North of Delmar Street and Little Field Avenue – Merrimac Street to 650' east of Sherbrook Street and Sherbrook Street – CD Avenue to Little Field Avenue, Project No. 504 208 680992. Chip seal.	23,202.85
B Avenue – 44 th Street east 1100', Project No. 504 208 680993. Chip seal.	18,955.29
B Avenue – 45 th Street west 1375', Project No. 504 208 680994. Chip seal.	5,291.80
TOWNSHIP TOTAL	89,657.50

• SCHOOLCRAFT TOWNSHIP ~ 36.18 Local Road Miles	
16th Street – XY Avenue to W Avenue, Project No. 504 419 680917. Double seal.	125,004.26
TOWNSHIP TOTAL	125,004.26

• TEXAS CHARTER TOWNSHIP ~ 88.80 Local Road Miles	
6th Street – S Avenue to Q Avenue, Project No. 504 413 680920. Chip seal.	34,358.84

- **LOCAL ROAD**
- **PREVENTIVE MAINTENANCE**
- Including Administrative and Equipment Allocations

PROJECT DESCRIPTION **TOTAL**

• **TEXAS CHARTER TOWNSHIP - Continued**

10th Street – S Avenue south 5338', Project No. 504 413 680921. Chip seal.	19,073.53
O Avenue – 4 th Street to 6 th Street, Project No. 504 413 680922. Crack seal.	2,185.93
PQ Avenue – 3 rd Street to 4 th Street and 4th Street – PQ Avenue to PQ Avenue, Project No. 504 413 680923, Chip seal.	14,379.26
RS Avenue – 6 th Street to 8 th Street, Project No. 504 413 680924. Chip seal.	22,020.41
S Avenue – 8 th Street to 12 th Street, Project No. 504 413 680925. Chip seal.	35,581.66
DNR Street – OP Avenue south 1050', Project No. 504 413 680930. Chip seal.	6,751.78
Beatrice Drive – Corporate Woods Drive east 1630' and Corporate Woods Drive – Beatrice Drive to N Avenue, Project No. 504 413 680995. Crack sealing.	5,473.30
Riesling Street – PQ Avenue north 200', Project No. 504 413 680996. Chip seal.	2,246.67
TOWNSHIP TOTAL	142,071.38

• **WAKESHMA TOWNSHIP** ~ 47.52 Local Road Miles

38th Street – W Avenue to V Avenue, Project No. 504 419 680897. Double seal.	86,304.78
44th Street – V Avenue south 600', Project No. 504 419 680998. Double seal.	19,032.58
TOWNSHIP TOTAL	105,337.36

Total Local Preventive Maintenance **1,310,372.15**



16th Street Chip Seal - Schoolcraft Township

- **LOCAL ROAD PROJECT SUMMARY**
- **Preservation – Structural Improvements and Preventive Maintenance**
- Including Administrative and Equipment Allocations

Township	Local Preservation Structural Improvements	Local Preventive Maintenance	Total Township Projects
Alamo	12,798.92	59,887.91	72,686.83
Brady	69,845.47	25,947.67	95,793.14
Charleston	0.00	0.00	0.00
Climax	0.00	158,057.06	158,057.06
Comstock	236,473.97	41,705.97	278,179.94
Cooper	63,377.83	103,714.33	167,092.16
Kalamazoo	182,663.12	39,353.72	222,016.84
Oshtemo	37,273.84	179,049.65	216,323.49
Pavilion	104,459.56	20,393.41	124,852.97
Prairie Ronde	39,178.36	84,042.99	123,221.35
Richland	17,795.24	136,148.94	153,944.18
Ross	26,077.71	89,657.50	115,735.21
Schoolcraft	0.00	125,004.26	125,004.26
Texas	92,416.09	142,071.38	234,487.47
Wakeshma	26,143.09	105,337.36	131,480.45
Total	908,503.20	1,310,372.15	2,218,875.35

Preservation-Structural Improvements: Roadwork, including placing a hard surface on a gravel road, reconstructing an existing road or bridge, resurfacing a road with HMA overlay or installing new culverts or catch basins.

Preventive Maintenance: Roadwork, including chip sealing, pavement crack filling, and wedging to preserve roads by retarding surface deterioration.

LOCAL ROAD PARTICIPATION FUNDS

The Board of County Road Commissioners determines, annually, the amount of local road participation funds that will be made available to each township. The distribution of the funds is based on township mileage and population and is determined on the same basis that local road fund money is distributed to the Board from the Michigan Transportation Fund.

Participation funds are made available to the townships for use on local road preservation-structural improvements, preventive maintenance, construction and special assessment projects. Townships, in order to receive local road participation funds, must match funds on a dollar-for-dollar basis.

Township	Allocation
Alamo	36,598.00
Brady	42,723.00
Charleston	20,313.00
Climax	35,751.00
Comstock	118,488.00
Cooper	82,879.00
Kalamazoo	143,581.00
Oshtemo	116,524.00
Pavilion	57,642.00
Prairie Ronde	40,938.00
Richland	59,680.00
Ross	53,158.00
Schoolcraft	43,333.00
Texas	112,434.00
Wakeshma	35,958.00
Total	1,000,000.00



PQ Avenue Chip Seal – Texas Township

● **TOWNSHIP CONTRIBUTIONS**
 ●
 ●

<u>Township</u>	<u>Preservation- Structural Imp. Contributions</u>	<u>Preventive Maintenance Contributions</u>	<u>Routine Maintenance Contributions</u>	<u>Special Assessment Contributions</u>	<u>Total Township Contributions</u>
Alamo	6,350.42	26,345.22	2,199.62		34,895.26
Brady	38,636.76	12,703.94	8,438.40		59,779.10
Charleston	0.00	9,920.53	2,642.40		12,562.93
Climax	0.00	117,099.04	8,182.44		125,281.48
Comstock	107,304.87	9,920.53	0.00		117,225.40
Cooper	30,006.14	51,569.46	0.00		81,575.60
Kalamazoo	90,631.65	19,304.58	525.60		110,461.83
Oshtemo	110,809.90	87,622.74	936.00		199,368.64
Pavilion	53,509.41	8,369.07	0.00		61,878.48
Prairie Ronde	19,439.07	59,895.66	18,041.22		97,375.95
Richland	8,565.55	76,764.36	1,540.80		86,870.71
Ross	12,872.11	42,608.20	3,578.04		59,058.35
Schoolcraft	0.00	71,886.94	0.00		71,886.94
Texas	63,812.12	65,203.25	0.00		129,015.37
Wakeshma	25,875.26	56,769.62	6,035.76		88,680.64
Total	567,813.26	715,983.14	52,120.28	0.00	1,335,916.68

Preservation-Structural Improvement Contributions: Payments made by township for preservation structural improvement projects

Preventive Maintenance: Payments made by township for preventive maintenance projects

Routine Maintenance Contributions: Payments made by township for dust control, miscellaneous

Special Assessment Contributions: Payments made by township for special assessment projects



1st Street south of O Avenue Winter Maintenance – Texas Township

- **LOCAL ROAD ROUTINE MAINTENANCE**
- **AND REVENUES**
- Including Administrative and Equipment Allocations

Township	Routine Maintenance Expenditure	Michigan Transportation Fund Revenues	Township Revenue for Maintenance	Total Local Road Fund Revenue
Alamo	278,768.64	140,413.44	2,199.62	142,613.06
Brady	255,471.83	160,243.79	8,438.40	168,682.19
Charleston	90,089.36	82,414.21	2,642.40	85,056.61
Climax	204,807.00	168,830.88	8,182.44	177,013.32
Comstock	406,020.47	272,021.48	0.00	272,021.48
Cooper	316,802.95	228,613.02	0.00	228,613.02
Kalamazoo	471,530.09	271,402.92	525.60	271,928.52
Oshtemo	458,452.98	270,820.74	936.00	271,756.74
Pavilion	117,451.45	175,926.14	0.00	175,926.14
Prairie Ronde	279,410.22	189,607.27	18,041.22	207,648.49
Richland	254,901.27	179,164.50	1,540.80	180,705.30
Ross	273,854.95	194,774.07	3,578.04	198,352.11
Schoolcraft	141,159.25	131,644.42	0.00	131,644.42
Texas	396,818.29	323,107.38	0.00	323,107.38
Wakeshma	547,010.35	172,906.11	6,035.76	178,941.87
Total	4,492,549.10	2,961,890.37	52,120.28	3,014,010.65



33rd Street south of S Avenue – Pavilion Township

- **ROUTINE MAINTENANCE COSTS**
- **For Calendar Year Ending December 31, 2009**
- Including Administrative and Equipment Allocations

2009			2008		
	Cost	Average Cost Per Mile	Cost	Average Cost Per Mile	Increase (Decrease) Per Mile
PRIMARY ROAD SYSTEM	449.18 Miles		449.18 Miles		
Surface Maintenance	811,582.49	1,806.80	705,311.74	1,620.55	134.20
Roadside Maintenance	796,361.32	1,772.91	858,073.82	1,971.54	(238.98)
Traffic Control	796,939.22	1,774.20	829,357.11	1,905.56	(172.00)
Winter Maintenance	1,144,285.78	2,547.47	1,866,131.80	4,287.69	(1,792.85)
Total	3,549,168.81	7,901.38	4,258,874.47	9,785.34	(2,069.63)
LOCAL ROAD SYSTEM	814.02 Miles		812.09 Miles		
Surface Maintenance	2,137,816.70	2,626.25	2,156,650.21	2,656.00	207.06
Roadside Maintenance	1,030,147.14	1,265.51	863,742.43	1,063.74	(125.51)
Traffic Control	230,554.27	283.23	285,256.84	351.31	(73.64)
Winter Maintenance	1,094,030.98	1,343.99	1,650,260.39	2,032.36	(719.35)
Total	4,492,549.09	5,518.98	4,955,909.87	6,103.41	(711.44)



Tree Crew – Texas Township

- **STATEMENT OF REVENUES AND EXPENDITURES**
- **For Calendar Year Ending December 31, 2009**
- Including Administrative and Equipment Allocations

	Primary Road Fund	Local Road Fund	Road Commission Fund	Total
REVENUE				
Michigan Transportation Fund	9,501,583.16	2,961,890.37	0.00	12,463,473.53
Optional Transfer	(2,192,937.07)	2,192,937.07	0.00	0.00
Critical Bridge Fund	152,568.84	0.00	0.00	152,568.84
Snow Removal Fund	1,096.26	1,986.68	0.00	3,082.94
Other State Revenue	6,941.20	0.00	0.00	6,941.20
Economic Development Fund	4,600.00	0.00	0.00	4,600.00
Federal Revenue	3,026,855.96	0.00	1,025,029.00	4,051,884.96
County Raised Revenue	188,957.73	1,359,419.60	0.00	1,548,377.33
Gain on Disposal of Equipment	0.00	0.00	24,006.75	24,006.75
Gain on Disposal of Property	0.00	1,051,980.62	0.00	1,051,980.62
Miscellaneous Revenue	34,620.42	2,030.46	32,514.26	69,165.14
Total Revenue	10,724,286.50	7,570,244.80	1,081,550.01	19,376,081.31
EXPENDITURES				
Construction/Capacity Improvement	0.00	1,051,980.62	0.00	1,051,980.62
Preservation - Structural Improvement	4,921,214.19	862,039.28	0.00	5,783,253.47
Routine and Preventive Maintenance	4,713,780.60	5,506,140.27	0.00	10,219,920.87
Other: Non-Motorized Pathway	0.00	0.00	1,025,029.00	1,025,029.00
Administration	562,980.05	433,565.59	0.00	996,545.64
Interest Expense	0.00	0.00	0.00	0.00
Equipment Account	(199,316.37)	(283,480.96)	(11,416.34)	(494,213.67)
	9,998,658.47	7,570,244.80	1,013,612.66	18,582,515.93
Non-Operating Expenditures				
* Net Capital Outlay	0.00	0.00	(93,742.18)	(93,742.18)
Total Expenditures	9,998,658.47	7,570,244.80	919,870.48	18,488,773.75
Increase (Decrease) in Available Operating Fund	725,628.03	0.00	161,679.53	887,307.56
Total Allocated Expenditures	10,724,286.50	7,570,244.80	1,081,550.01	19,376,081.31

*Net Capital Outlay - Expenditures less depreciation and depletion.

● **STATEMENT OF REVENUES**
 ● **For Calendar Years 2009 – 2008**
 ●

	2009	2008	Increase (Decrease)
Michigan Transportation Fund			
Primary Road Fund	9,501,583.16	9,692,893.07	(191,309.91)
Local Road Fund	2,961,890.37	3,037,679.01	(75,788.64)
	12,463,473.53	12,730,572.08	(267,098.55)
Critical Bridge Fund	152,568.84	4,570,599.31	(4,418,030.47)
Snow Removal Fund	3,082.94	3,164.61	(81.67)
Other State Contributions - Jobs Today	6,941.20	561,981.77	(555,040.57)
Economic Development Fund			
Target Industries (A)	0.00	0.00	0.00
Rural Primary (D)	4,600.00	0.00	4,600.00
Urban Area (F)	0.00	0.00	0.00
Total Michigan Transportation Fund	12,630,666.51	17,866,317.77	(5,235,651.26)
Federal Revenue			
D Funds	11,513.37	80,650.90	(69,137.53)
Bridge	100.29	212,225.06	(212,124.77)
Surface Transportation Program (STP)	1,617,645.39	2,583,635.91	(965,990.52)
Other: ARRA,CMAQ,HRRR	2,422,625.91	441,720.85	1,980,905.06
Total Federal	4,051,884.96	3,318,232.72	733,652.24
County Raised Revenue			
Special Assessment Districts	31,802.45	10,323.05	21,479.40
City Contributions	75,000.00	45,063.78	29,936.22
Township Contributions	1,335,916.68	1,544,771.41	(208,854.73)
Contributions From Private Sources	1,051,980.62	0.00	1,051,980.62
Other Contributions	105,658.20	120,370.09	(14,711.89)
Total County	2,600,357.95	1,720,528.33	879,829.62
Miscellaneous Revenue			
Gain on Disposal of Equipment	24,006.75	91,922.10	(67,915.35)
Gain on Sale of Property	0.00	0.00	0.00
Salvage Sales	6,111.00	11,763.65	(5,652.65)
Sale of Land	0.00	0.00	0.00
Interest Earned	59,616.94	105,389.24	(45,772.30)
Property Rentals	3,437.20	1,628.34	1,808.86
Total Other	93,171.89	210,703.33	(117,531.44)
Total Revenue	19,376,081.31	23,115,782.15	(3,739,700.84)

● **STATEMENT OF EXPENDITURES**
 ● **For Calendar Years 2009 – 2008**
 ●

	2009	2008	Increase (Decrease)
OPERATING EXPENDITURES			
Construction/Capacity Improvements			
Local Road System	1,051,980.62	0.00	1,051,980.62
Total Construction/Capacity Improvements	1,051,980.62	0.00	1,051,980.62
Preservation - Structural Improvements			
Primary Road System	4,451,731.42	5,992,801.34	(1,541,069.92)
Primary Non-motorized	110,955.57	52,052.88	58,902.69
Primary Bridge	358,527.20	5,894,100.99	(5,535,573.97)
Total Primary Preservation-Structural Improvements	4,921,214.19	11,938,955.21	(7,017,741.02)
Local Road System	751,083.71	969,113.64	(218,029.93)
Local Non-motorized	110,955.57	21,469.69	89,485.88
Local Bridge	0.00	0.00	0.00
Local Assessments	0.00	233,033.86	(233,033.86)
Total Local Preservation-Structural Improvements	862,039.28	1,223,617.19	(361,577.91)
Total Preservation-Structural Improvements	5,783,253.47	13,162,572.40	(7,379,318.93)
Routine and Preventive Maintenance			
Primary Road System	2,866,198.95	2,122,554.51	743,644.44
Primary Bridge	5,637.44	18,776.23	(13,138.79)
Winter Maintenance	1,085,763.15	1,793,357.36	(707,594.21)
Traffic Control	756,181.06	797,014.27	(40,833.21)
Total Primary Routine/Preventive Maintenance	4,713,780.60	4,731,702.37	(17,921.77)
Local Road System	4,247,317.47	3,685,080.43	562,237.04
Local Bridge	1,981.30	7,168.94	(5,187.64)
Snow Removal and Ice Control	1,038,078.55	1,585,904.39	(547,825.84)
Traffic Control	218,762.95	274,132.54	(55,369.59)
Total Local Routine/Preventive Maintenance	5,506,140.27	5,552,286.30	(46,146.03)
Total Routine/Preventive Maintenance	10,219,920.87	10,283,988.67	(64,067.80)
Administrative Expense	996,545.64	951,387.04	45,158.60
Interest Expense	0.00	37,456.36	(37,456.36)
Other: Non-Motorized Pathway	1,025,029.00	0.00	1,025,029.00
Equipment Expense			
* Direct Expense	825,244.49	845,569.97	(20,325.48)
* Indirect Expense	545,726.70	585,203.76	(39,477.06)
* Operating Expense	303,917.77	505,958.31	(202,040.54)
Total Equipment Expense	1,674,888.96	1,936,732.04	(261,843.08)
* Credit to Equipment Expense	(2,169,102.63)	(2,865,988.11)	696,885.48
Net Equipment Expense	(494,213.67)	(929,256.07)	435,042.40
Total Operating Expenditures	18,582,515.93	23,506,148.40	(4,923,632.47)

● **STATEMENT OF EXPENDITURES**
 ● **For Calendar Years 2009 – 2008**
 ●

	2009	2008	Increase (Decrease)
NON-OPERATING EXPENDITURES			
Capital Outlay			
Land	0.00	0.00	0.00
Buildings	29,232.00	0.00	29,232.00
Road Equipment	333,372.18	75,490.00	257,882.18
Shop and Office Equipment	28,280.76	45,690.03	(17,409.27)
Equipment Retirement	0.00	0.00	0.00
Depletable Assets	0.00	0.00	0.00
Depreciation and Depletion	(484,627.12)	(560,010.01)	75,382.89
Net Capital Outlay	(93,742.18)	(438,829.98)	345,087.80
Total Expenditures	18,488,773.75	23,067,318.42	(4,578,544.67)
Increase (Decrease) in Net Assets	887,307.56	49,347.37	837,960.19
Total Expenditures	19,376,081.31	23,116,665.79	(3,740,584.48)
* Direct Expense - Cost of equipment repairs * Indirect and Storage - Mechanic's fringe benefits, administrator salaries, insurance, garage buildings maintenance and depreciation * Operating Expense - Gasoline, diesel, oil, grease, and anti-freeze * Credit to Equipment Expense - Equipment costs charged against maintenance and heavy maintenance projects			



Kalamazoo County Road Commission Centennial Celebration

ASSETS

General Operating Fund

County Treasurers Cash Account		1,388,658.17	
Road Trust Fund		0.00	
Imprest Cash Office		200.00	
Bank Account - Payroll		1,000.00	
Bank Account - Vendor		2,000.00	
Bank Account - Electronic		500.00	
Interest Bearing Deposits		2,500,000.00	
Accounts Receivable:			
Michigan Transportation Fund	1,977,796.79		
Due from State-Other	0.00		
Due on County Road Agreements	43,653.38		
Due on Special Assessments	28,658.42		
Interest Receivable	40,136.48		
Sundry Accounts Receivable	3,025.65	2,093,270.72	
Inventories:			
Equipment Material	48,913.09		
Road Material	565,650.01	614,563.10	
Surplus Properties		0.00	
Advances - Township		68,352.20	
Prepaid Insurance		175,328.90	
Deferred Expense - STP, Safety, Critical Bridge		352,853.00	
Total General Operating Assets			7,196,726.09

FIXED ASSET GROUP

Land and Improvements		1,197,675.52	
Buildings	3,624,212.91		
Less Accumulated Depreciation	(2,079,521.36)	1,544,691.55	
Equipment Road	6,809,215.98		
Less Accumulated Depreciation	(6,115,437.61)	693,778.37	
Equipment Shop	142,975.16		
Less Accumulated Depreciation	(133,929.34)	9,045.82	
Equipment Office	510,236.87		
Less Accumulated Depreciation	(462,475.33)	42,368.50	
Equipment Engineers	262,301.74		
Less Accumulated Depreciation	(243,018.50)	19,283.24	

● **COMBINED BALANCE SHEET**
 ● **For Calendar Year 2008**
 ●

FIXED ASSET GROUP (Continued)

Infrastructure	228,518,576.22	
Less Accumulated Depreciation	(118,495,260.96)	110,023,315.26
Depletable Assets	43,344.75	
Less Accumulated Depletion	(42,622.21)	722.54
Yard and Storage Equipment	9,705.51	
Less Accumulated Depreciation	(9,705.51)	0.00
Net Fixed Assets		113,536,273.84
<hr/>		
TOTAL ASSETS		120,732,999.93

LIABILITIES AND FUND EQUITIES

GENERAL OPERATING FUND

Accounts Payable		339,845.23
Accrued Liability		193,078.01
Deferred Revenue - Special Assessment		28,658.42
Deferred Revenue - Heavy Maintenance Project		
Escrow Agreements		73,754.03
Kalamazoo River Trailway		218,484.70
Kalamazoo Area Transportation Study		89,403.69
Advances: Townships		68,352.20
Available Operating Equity:		
Primary Road - Reserved	3,910,638.08	
Local Road - Reserved	0.00	
Road Commission	2,274,511.73	6,185,149.81
Total General Operating Liabilities and Equity		7,196,726.09
<hr/>		
FIXED ASSET GROUP		
Plant and Equipment Equity		113,536,273.84
<hr/>		
TOTAL LIABILITIES AND FUND EQUITIES		120,732,999.93

GLOSSARY

All-season roads—roads that have a sub-base, base and surface of adequate thickness and composition to withstand year-round use of heavy vehicles without damage.

Cape Seal (sami-seal)—Chip Seal followed by a micro-seal. An application process to provide a crack barrier between an old and new road surface including an emulsion, stone matrix, and a wearing course.

Chip seal—a type of seal coat composed of a liquid asphalt emulsion that is applied in a single application to an existing HMA surface, which then is covered with a single layer of stone or slag and imbedded by a mechanical means of rolling.

Double seal—two applications of chip seal applied to a prepared gravel base.

Fog seal—a light application of slow setting asphalt emulsion diluted with water and without addition of any aggregate applied to the surface of a bituminous pavement.

HMA (Hot Mix Asphalt) overlay—the application of a hot mixture of asphalt, a glue-like material, and various sizes of stone, placed on top of gravel or other old surfaces and rolled to compact in place.

HMA (Hot Mix Asphalt) spot wedge—a repair patch placed by a paving machine that varies in depth and length.

Hot rubber crack sealing—a rubber material consisting of polymers, virgin rubber and asphalt emulsion to form an elastic moisture barrier over cracks in the road that, when properly heated and applied, will maintain its form over extreme heat and cold fluctuations in the roadway.

Local roads—county roads not classified as primary roads in the county road system. KCRC has 814 miles of these roads, including those in plats.

Micro seal—a granulated material composed of a specifically formulated asphalt emulsion and a type II sand mix of limestone and steel slag mix, emulsified and applied to the roadway.

Preservation—structural improvement (formally known as heavy maintenance)—roadwork, including placing a hard surface on a gravel road, reconstructing an existing road or bridge, resurfacing a road with a HMA overlay or installing new culverts or catch basins.

Preventive maintenance—roadwork, including chip sealing, pavement crack filling, and wedging to preserve roads by retarding surface deterioration.

Primary roads—major roads within the county road system in Kalamazoo County. Primary roads accommodate 85 percent of the county's road system traffic and include more than 449 miles of roadway.

Reconstruction—removing the existing road surface and replacing it with materials of a thickness that conforms to current standards for pavement design. Vertical and horizontal alignment drainage improvements are also factors of reconstruction.

Rehabilitation—placing additional surface material or doing other work to return a road, including its shoulders, to structural or functional adequacy.

Resurfacing—placing new pavement material over existing pavement. Shoulder material is added to match the elevation of the new pavement.

Routine maintenance—roadwork, including pothole filling, pavement marking, roadside mowing, traffic road sign installation and snow removal.

Sami seal—Chip seal followed by a micro-seal. An application process to provide a crack barrier between an old and new road surface including an emulsion, stone matrix, and a wearing course.

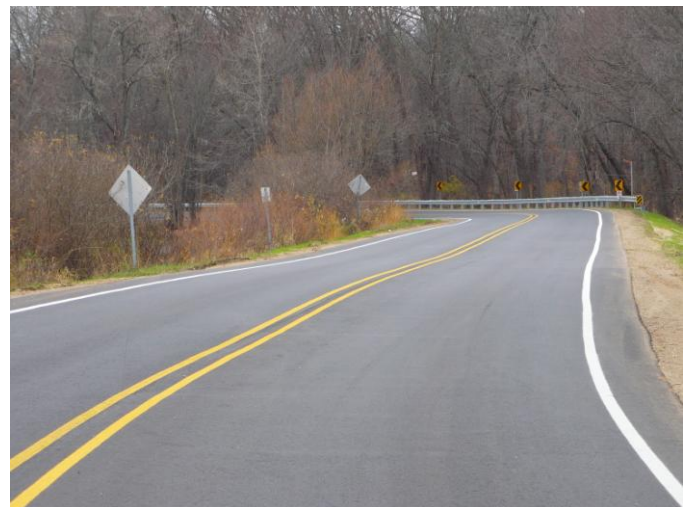
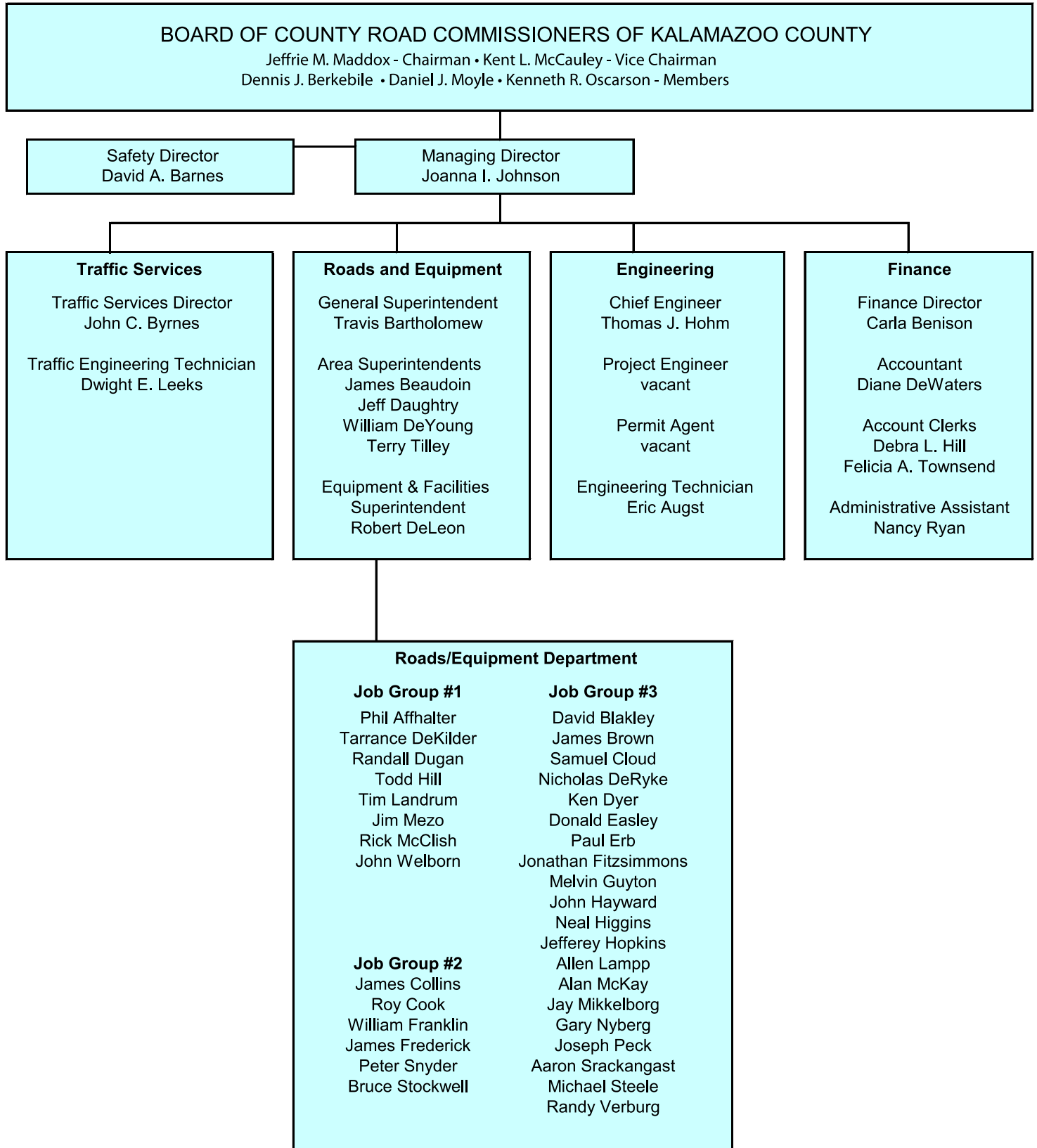


TABLE OF ORGANIZATION

December 2009



100 YEARS OF SERVICE

The Kalamazoo County Road Commission was formed by a vote of the people in 1909. Five county residents are appointed by the Kalamazoo County Board of Commissioners to serve staggered six-year terms as road commissioners. To better serve our County and local officials, each Road Commissioner has also been assigned as liaison to a township.

MEET THE 2009 ROAD COMMISSIONERS

Jeffrie M. Maddox – Chairman

Mr. Maddox, a Galesburg resident, joined the commission in January 2005 and was reappointed in January 2009. He was elected Chairman of the Board in 2007, 2008 and 2009 and served as Vice Chairman in 2005 and 2006. Mr. Maddox was a member of the board of directors of the Home Builders Association of Greater Kalamazoo from 2001 - 2005. His career has included extensive sales and management experience. Mr. Maddox has been with Bel-Aire Heating & Air Conditioning since 1995. Currently, he is the company's sales manager. His term expires 12/31/2014. Township representation: Comstock, Cooper, and Ross townships.

Kent L. McCauley – Vice Chairman

Mr. McCauley was appointed to the road commission in January 2007. He served as Vice Chairman in 2009. A Vicksburg resident, he serves on the School Board Foundation and United Way. He also has been active with the Vicksburg Village Council, Michigan Road Builders Association, American Underground Contractors, Michigan Asphalt and Paving Association, Michigan Aggregate Association and Parks & Recreation Commission. Mr. McCauley is a sales representative with ALTA Equipment Company. His term expires 12/31/2012. Township representation: Brady, Climax, and Pavilion townships.

Dennis J. Berkebile – Member

Mr. Berkebile was appointed to the road commission in January 2005 and served as Chairman in 2005 and 2006 and Vice Chairman in 2007 and 2008. He has been involved in community activities throughout his career, both in Indiana and Michigan. A Texas Township resident, he has been a member of the township's board, zoning board of appeal and planning commission. He serves as Chairman of the MRC Industries Board and Chairman of the Michigan Works Board. He also serves on the Food Bank of South Central Michigan, Salvation Army, Kalamazoo Area Transportation Study, Hospital Hospitality House, and the Youth for Christ and Portage Rotary boards. Since 1996, Mr. Berkebile has been employed by Consumers Energy and currently serves as area manager. His term expires 12/31/2010. Township representation: Charleston, Schoolcraft, and Texas townships.

Daniel J. Moyle – Member

Mr. Moyle was appointed to the road commission in November 2007. A Texas Township resident, Mr. Moyle has many years of experience managing a company that maintained and constructed highways, roads and airports. He currently serves on the Environmental Health Advisory Council. Mr. Moyle is now retired from Globe Construction Company. His term expires 12/31/2012. Township representation: Alamo, Oshtemo, and Richland townships.

Kenneth R. Oscarson – Member

Mr. Oscarson was appointed to the commission in November 2007. A Schoolcraft Township resident, Mr. Oscarson has worked with county road commissions for over 36 years as a professional engineer and has been active in municipal consulting for villages and townships. He has experience as a Planning Commissioner and Zoning and Building boards of appeals. Mr. Oscarson was most recently employed by Fleis & Vandenbrink. His term expires 12/31/2010. Township representation: Kalamazoo, Prairie Ronde, and Wakeshma townships.



Dennis J. Berkebile Kent L. McCauley Jeffrie M. Maddox Kenneth R. Oscarson Daniel J. Moyle



3801 East Kilgore Road – Kalamazoo, Michigan 49001
Telephone - (269) 381-3171 – Fax - (269) 381-1760
www.kalamazoo-countyroads.com